



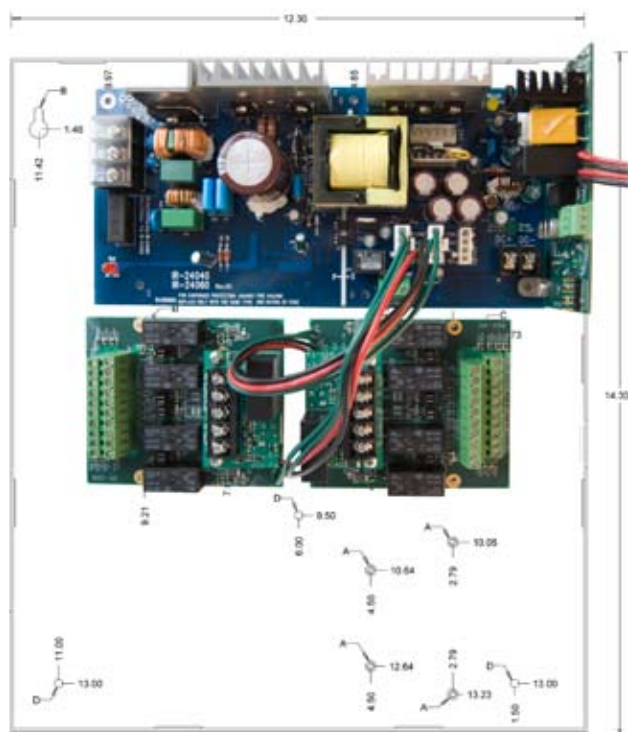
Power Supply Portfolio Update

The power supply portfolio is in the process of being redesigned to reflect the changing needs of the access control market. The new products will improve overall performance, simplify installation and wiring and provide additional functionality.

While price details are not yet ready to be released, we do want to help you plan for the transition as efficiently as possible. Therefore, detailed product specification will be available on PartnerLink by end of April. The new SKU's are planned to be available for order placement and shipping during Q3 of 2010. We anticipate details regarding price and exact timing, to be ready for release in the June/July timeframe. The current SKU's continue to be available for order placement through Q3 and available while supplies last in Q4.

Common Product Specs for Portfolio

- Universal 110-220 VAC input power
- UL294 listed for access control applications
- Regulated and filtered DC outputs
- Fused primary input
- AC input and DC output monitoring circuit with LED indication
- AC input status indication on outside cover
- NEMA 1 enclosure with hinged cover, key lock and lock down screws



Features being addressed in the redesign:

- Full product line designed to address the needs of the access control market. All power supplies and option boards are UL294 Listed
- All power supplies will accept option boards without need for special rack or adapter
- Same power rating at 12 and 24 VDC, with universal 110 – 220 VAC input
- New alarm board mounting provides greater configuration possibilities
- Von Duprin power supply output increased to 4 amps, more configurations with available option boards. Maintains current price point

Power Supply Replacement Outline

Current Portfolio	New Portfolio
Von Duprin 861	PS902 – 2 Amp 2A @ 12/24 VDC output, field selectable with jumper
Schlage 505	
bright blue SBB-3A	PS904 – 4 Amp 4A @ 12/24 VDC output, field selectable with jumper
Schlage 510	
bright blue SBB-5A	PS906 – 6 Amp 6A @ 12/24 VDC output, field selectable with jumper
Schlage 515	
Von Duprin 873	PS914 – 4 Amp Hi Inrush (Von Duprin) 4A @ 12/24 VDC output, field selectable with high inrush for use with Von Duprin electrified exit devices

Option Board Replacement & Transition Outline

Current Portfolio	New Portfolio
Schlage DCM – 2 Relay Dual Control	900-4R – 4 Relay Output (Von Duprin & Schlage)
Schlage RCM – 2 Relay Dual Control	
Von Duprin 871-2 – 2 Zone	900-2RS – 2 Relay Output (Von Duprin only) 900-2Q – 2 Relay Output with Comm. (Von Duprin only)
Von Duprin 871-2Q – 2 Zone	
bright blue PDD-FT – Fire Transfer Relay Module	900-FA – Alarm Relay (Von Duprin & Schlage)
Schlage EIR – Emergency Relay	
Von Duprin Fire Alarm Relay	
Von Duprin – Battery Backup	900-BB – Battery Backup (Von Duprin & Schlage)
N/A	900-8F – 8 Fused Output (Von Duprin & Schlage) 900-8P – 8 PTC Output (Von Duprin & Schlage)
Von Duprin 873-AL – Alarm 1-2 Zones	900-4RL – 4 Relay Logic 4TD, AO, SI (Von Duprin & Schlage)
Von Duprin 873-AO – Auto Operator Function	
Von Duprin 873-SI – Security/Safety Interlock	
Von Duprin 873-4TD – 4 Zone Controller with Time Delay	
Von Duprin 873-AC – Access Control	
Von Duprin 873-DE – Delayed Egress	